



Fiscal Year 2023-2024

PROVINCIAL STUDENT PRACTICE EDUCATION METRICS

Prepared for:
BC Student Practice Education Network

Prepared by:
Student Practice Education Data Working Group

TABLE OF CONTENTS

Executive Summary	3
Introduction	4
Student Practice Education in British Columbia.....	4
Student Practice Education at a Glance.....	7
Provincial Student Practice Education Comparative Summary Data.....	8
Table 1: Summary Comparative Data	8
Provincial Analysis	9
Indicator #1 - Monitor Provincial Student Practice Education Activities	9
Figure 1: Student Hours at Health Authorities Comparing FY 2021-22, 2022-23 and 2023-24	9
Figure 2: Student Placements at Health Authorities Comparing FY 2021-22, 2022-23, and 2023-24.....	10
Table 2: Student Placement and Hours All Disciplines & Sub-disciplines by Receiving Agency FY 2023-24.....	11
Figure 3: Students in Placement by Month FY 2023-24 – All Disciplines	15
Table 3: Confirmed Student Placements for all Disciplines and Sub-disciplines by Month FY 2023-24	16
Indicator #2 - Monitor Placement Coordination Efficiency	21
Figure 5: Requests Cancelled, Confirmed, or Declined by Discipline FY 2023 – 24.....	21
Indicator #3 - Build Placement Capacity and Innovation	22
Figure 6: Placement request lifecycle	22
Figure 7: Reasons for Declined and Cancelled Requests Grouped by Category FY 2023-24	22
Figure 8: Top 10 Reasons for Declined and Cancelled Requests FY 2023-24	23
Appendix A: Provincial Student Practice Education Annual Metrics Framework	24
Appendix B: Regional Student Practice Education Metrics Framework	25
Appendix C: Glossary	26
Appendix D: Data Tables	27
Table 4: Total # and % of Placements Request Status all Disciplines by Fiscal Year.....	27
Activity at BC Health Authorities and All Other Receiving Agencies	28
Figure 9: Confirmed Activity at HAs and All Other Receiving Agencies for 3 years.....	28
Activity from Post-Secondary Institutions Outside BC	29
Figure 10: Number of Student Placements by in-BC and Out-of-BC Schools by FY – All Disciplines.....	29
Sub-disciplines and BC Post-Secondary Institutions List	30
Table 5: All Sub-disciplines Reported in FY 2023- 24 and the Providing Post-Secondary Institution.....	30
Appendix E: Student Practice Education Data Working Group Membership	35
Appendix F: List of referenced URLs	36

EXECUTIVE SUMMARY

This Provincial Student Practice Education Metrics Report provides student practice education metrics across British Columbia. The intent of the report is to:

- Acknowledge and celebrate the commitment of those who support student education
- Recognize collaborations amongst placement settings and academic partners across the province
- Provide data to inform operational and strategic decisions, including workforce planning, building capacity for student education, quality practice environments, and priority areas of focus and innovation
- Identify opportunities for further development

Indicator #1 - Monitor Student Practice Education Activities

Student Practice Education (SPE) activities are tracked using the Health Sciences Placement Network (HSPnet). It provides a web-based system for managing practice education in the health sciences and serves as the source of data for this report. SPE activities are reported by both the number of student placements and the placement hours. The focus of this report is the SPE activities occurring in health authorities in British Columbia.

In the fiscal year (FY) 2023-24, there was an increase in both the number of student placements (33,708 from 33,169) and in the placement hours (4,927,529 from 4,827,076) from FY 2022-23. The overall distribution of placements across the health authorities is consistent with last year.

Indicator #2 - Monitor Student Practice Education Coordination Efficiency

Placement coordination efficiency measures indicate the amount of coordination activity required to result in a confirmed placement. As all required student placements are eventually secured, the Cancel and Decline requests indicate the overall coordination effort and areas where process improvement or advanced planning could streamline coordination efforts in the future. In FY 2023-24, there was a slight increase in efficiency to 68% of requests resulting in confirmed placements, compared to FY 2022-23 (67%).

Indicator #3 - Build Placement Capacity and Innovation

Placement Requests (PRs) in HSPnet can be Confirmed and Accepted (these indicate placements that occurred); and Declined (DecA) and Cancelled (Canc) (these indicate placement requests that did not occur). A reason is indicated for Declined or Cancelled placement requests and the top ten reasons are included in this report for the purposes of monitoring and planning focused strategies to address the reasons.

In FY 2023-24, the main reason Placing Agencies cancel a request is student attrition. The top reasons that a Receiving Agency declines a request are a lack of staff to preceptor/supervise students and the number of requests exceeds available staff and physical space.

Data-Informed Planning

By creating and providing this provincial student education metrics report, the aim is to provide data to inform operational and strategic decisions, including workforce planning, building capacity for student education, quality practice environments, and priority areas of focus and innovation; and, to identify opportunities for further development. The Report is provided as a resource so that SPE network partners can review the activities that have occurred, consider the changing contexts of our health system, and develop a collaborative plan for the year ahead. This strategic approach will be beneficial for delivering clinical placement opportunities that are well-aligned with the needs of the people in British Columbia and our health system.

INTRODUCTION

This Provincial Student Practice Education Metrics Report provides student practice education metrics across British Columbia. It highlights activities between all post-secondary institutions (PSI) offering health provider programs and BC health authorities using HSPnet to coordinate student placements and fulfill requests. The intent of the report is to:

- Acknowledge and celebrate the commitment of those who support student education
- Recognize collaborations amongst placement settings and academic partners across the province
- Provide data to inform operational and strategic decisions, including workforce planning, building capacity for student education, quality practice environments, and priority areas of focus and innovation
- Identify opportunities for further development

STUDENT PRACTICE EDUCATION IN BRITISH COLUMBIA

Student Practice Education in British Columbia includes the learning activities that occur in health settings for students who are enrolled in a health program in a recognized academic institution which have a placement as part of their program requirements.

Preparing the healthcare team members of tomorrow is possible because of the support and commitment from many people in a wide variety of roles in both the health and education sectors, as well as with provincial partners. Oversight is provided by the Planning Board for Health and Medical Education, with representation from the BC Ministry of Post-Secondary Education and Future Skills (PSFS), and the BC Ministry of Health (HLTH).

Provincial Student Practice Education Policy

The PSIs, health authorities (HAs), First Nations Health Authority (FNHA), Provincial Health Services Authority (PHSA), and Providence Health Care (PHC) employ a collaborative approach to the shared responsibility for delivering the clinical component of the students' education program as outlined in the [Provincial Student Practice Education Policy](#).

Health Human Resource Strategy

British Columbia launched a [health human resource strategy](#) in Fall of 2022 to optimize the health system, expand training and further improve recruitment and retention. There are 70 actions organized into four pillars: Retain, Redesign, Recruit and Train in this multi-year strategy, with actions that have begun in 2022-23.

The strategy includes investments in health program expansions. The following lists some occupation-specific announcements that can be followed in subsequent reports as the students in these expanded seats move into their clinical placements:

- a. [Nursing](#) and [Midwifery](#)
- b. [Allied](#) including [Paramedics](#)
- c. [UBC Medicine](#) and [SFU Medicine](#)

The BC Student Practice Education Network is comprised of partners from the HLTH, PSFS, PSIs, and HAs/FNHA/PHC. The SPE Network also includes the contributions from other groups, such as BC Health Regulators, professional associations, research networks, and subject matter experts.

Student Practice Education Data Working group (SPEDWG)

The Student Practice Education Data Working Group was established to:

- Provide leadership for gathering, tracking and reporting on student placement information across BC.
- Oversee the applied use of the Student Practice Education management software (HSPnet).
- Promote effective utilization of student placement data.
- Provide advice and recommendations to the HSPnet National Alliance through the HSPnet-BC Lead Agency and/or the HSPnet Operational Team on student practice education practice and operations that could be supported by data and analytics.

The SPEDWG is accountable to the Provincial Student Practice Education Coordinating Committee (PSPECC). The SPEDWG is comprised of representatives from PSI, health care organizations (HA/PHSA/PHC), PSFS, HLTH and the HSPnet Team. The Working Group has rotating Co-Chairs from different sectors, with PHSA serving as the Working Group Secretariat. The SPEDWG launched in January 2022 and is currently meeting bi-monthly.

Data Stewardship Principles and Approach

Student Practice Education Data Stewardship Principles:

- Each HSPnet-user organization always has full access to their own organization's data and may use it and share it as determined by their organization.
- SPEDWG supports the stewardship of aggregate provincial data as an asset of the health system.

Approach to provincial data:

- Aggregate provincial data is available to the SPEDWG members via the BC Provincial Report Card (past 4 years of data).
- Analysis, monitoring, and sharing of data will be done in consultation with each sector (Health, Education, Government).
- Aggregate provincial data shall be made available to assist with improved planning and coordination.
- This report is structured based on the Indicators identified in the Provincial Student Practice Education Metrics Framework ([Appendix A](#)).

Note: Aggregate provincial data does not include unique individual (student, instructor, preceptor) information or identifiers.

Student Practice Education Activity Data – Limitations and Opportunities

HSPnet provides a web-based system for managing practice education in the health sciences and serves as the source of data for this report. Used across Canada and internationally since 2003, HSPnet provides a rich database and tools to support practice education. A glossary of terms used for HSPnet is found in [Appendix C](#). As the province develops the use of student education data there are a few caveats to be named:

- There is some variation in the data elements and usage of HSPnet across health organizations, disciplines, and PSI. This report provides an opportunity for closer examination, discussion, and possibility for establishing more consistency (where appropriate) in the data and usage of the platform.
- As such, the intent of this report is to build an understanding, transparency, and foster dialogue – one should be cautious about drawing any firm conclusions without further inquiry from respective partners.
- Because HSPnet is a rich data repository for student activities, there are choices in the data selected and presented here as an example of what is possible to guide planning and decision-making.

Placements occurring at receiving sites not documented in HSPnet are not included in the Tables and Figures throughout the document. Placements in HSPnet at non-health authority receiving agencies are provided as an aggregate in Figure 8.

Collected annually, changes can occur to the previous years' data that is reflected in each year's collection. For example, pending placements in the previous year become either confirmed, cancelled, or declined in subsequent years. Also, the list of PSIs, sites, and sub-disciplines can be variable from year to year.

Lastly, metrics tell an important but only partial story of the journey of health program students becoming new team members in the health care system. There is opportunity to expand the report beyond activity metrics to include measures that indicate students' learning experiences in the clinical environment and the opportunities provided to develop and demonstrate relevant competencies.

- Medical students are also part of the clinical placement activities across the province. At this time, not all health organizations have medical learner placement information available in HSPnet. Work is underway to include Medical Undergraduates (MDUG) data in HSPnet across the province and will be considered for future reports.
- Paramedic placements at BC Emergency Health Services (BCEHS) are transitioning onto HSPnet. BCEHS provides the on-car practice experience required for all paramedic programs. This year, Table 1 and 2 includes on-car placements of Primary Care and Advanced Care Paramedics in the PHSA data, under the discipline of Emergency Medical Technology. Paramedic placements in health authorities remain in health authority data, separate from the on-car activity at BCEHS. The on-car placement activity is not included in other tables and figures throughout the report as it is only available for 2022-23 and 2023-24.
- FNHA also supports student practice education activities in a variety of ways across the province. As FNHA is in the process of transitioning to use HSPnet for student placement coordination, data that reflects their role with students will be available in future updates.

Data-Informed Planning

As stated above, two of the overall intentions of creating and providing this provincial student education metrics report are to provide data to inform operational and strategic decisions, including workforce planning, building capacity for student education, quality practice environments, and priority areas of focus and innovation; and, to identify opportunities for further development. It is intended that taking time each year to look back and review the activities that have occurred as well as consider the changing contexts of our health system and develop a collaborative plan for the year ahead will be beneficial for delivering clinical placement opportunities that are well-aligned with the needs of the people in British Columbia and our health system.

STUDENT PRACTICE EDUCATION AT A GLANCE

Student placements in BC are tracked according to requests made in health authorities and other receiving agencies (e.g., private clinics). The below infographic is the overall activity by hours and number of student placements.

FISCAL
YEAR
2023-24

STUDENT PRACTICE EDUCATION in British Columbia



33,708

Total number of student placements, excluding medical students and residents, at BC Health Authorities (in FY 22-23 it was 33,169)

STUDENT PLACEMENTS



HOURS

4,927,529

Total number of Students Practice Education Hours, excluding medical students and residents, at BC Health Authorities (in FY 22-23 it was 4,827,076)



48 BC schools placing in 6 health authorities



68%

Percentage of requests resulting in Confirmed placements (in FY 22-23 it was 67%)

96

Number of sub-disciplines placing students in BC Health Authorities

PROVINCIAL STUDENT PRACTICE EDUCATION COMPARATIVE SUMMARY DATA

Summary provincial data is provided in Table 1 by key measures. Subsequent tables provide detailed data.

Table 1: Summary Comparative Data

Indicator	Key Measure Description	FY 2021-22	FY 2022-23	FY 2023-24
Monitor Provincial Student Education Activities	Total Number of Student Hours by Health Authority	4,702,967	4,827,076	4,927,529
	FHA	1,414,679	1,413,123	1,480,943
	IHA	818,979	826,449	792,993
	NHA	326,035	354,657	317,464
	PHSA (includes BCEHS)	252,168	342,668	408,409
	VCHA (includes PHC)	1,090,504	1,096,677	1,161,288
	VIHA	800,602	793,502	766,433
	Total Number of Students Placements by Health Authority	31,984	33,169	33,708
	FHA	9,226	9,509	9,683
	IHA	6,033	6,606	6,398
	NHA	2,879	3,002	2,625
	PHSA (includes BCEHS)	1,622	2,227	2,815
	VCHA (includes PHC)	7,328	7,036	7,352
VIHA	4,896	4,789	4,835	
Monitor Provincial Student Education Activities	Percentage of Total Student Hours by Health Authority			
	FHA	30%	29%	30%
	IHA	17%	17%	16%
	NHA	7%	7%	6%
	PHSA (includes BCEHS)	5%	7%	8%
	VCHA (includes PHC)	23%	23%	24%
VIHA	17%	16%	16%	
	Year-to-year Increase in Student Hours	12%	3%	2%
Monitor Placement Coordination Efficiency	Percentage of Requests Resulting in Confirmed Placements (decline/cancelled requests are resubmitted to place all students)	65%	67%	68%
Build Placement Capacity and Innovation	Number of Sub-discipline Programs placing students in BC health authorities	96	100	96
	Number of BC Post-Secondary Institutes placing students in BC Health Authorities		45	48

PROVINCIAL ANALYSIS

INDICATOR #1 - MONITOR PROVINCIAL STUDENT PRACTICE EDUCATION ACTIVITIES

A total of 24,943 placement requests were made by Placing Agencies in 2023-24 ([Appendix D](#), Table 4). Of the confirmed placements (17,011), there were 4.9 million student hours hosted in British Columbia health authorities and a total of 33,708 student placements.

To compare the HA student placement activity, Figures 1 and 2 show the percentage of hours and placements for the last three years for all disciplines. Overall, the level of activity is consistent across fiscal years, and is relative to the size of the health authority. Of the confirmed placements, FHA hosted the greatest percentage, at 31%, followed by VCHA at 24%. Northern Health (7%) and PHSA (7%) hosted the smallest percentage.

Figure 1: Student Hours at Health Authorities Comparing FY 2021-22, 2022-23 and 2023-24

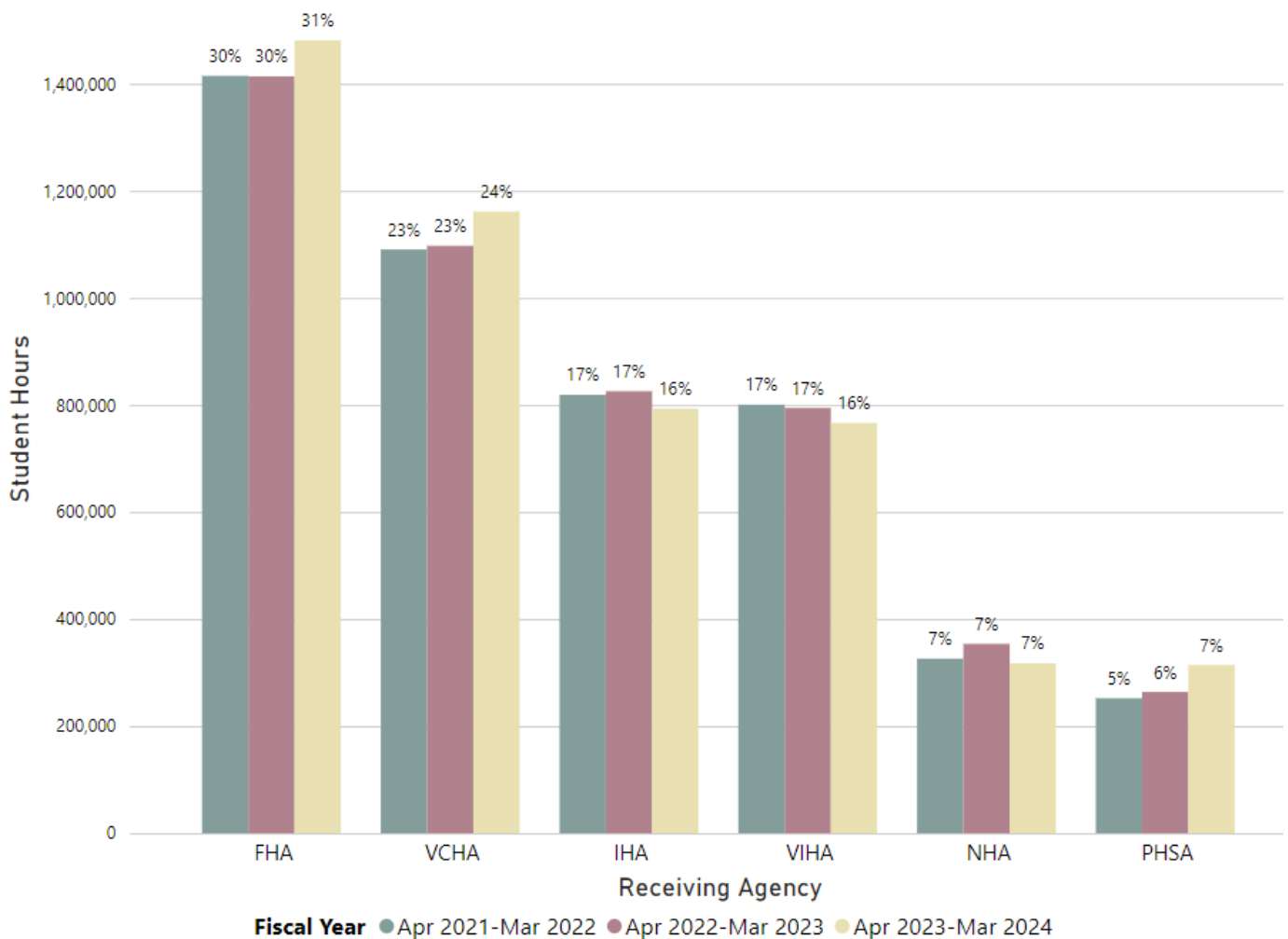
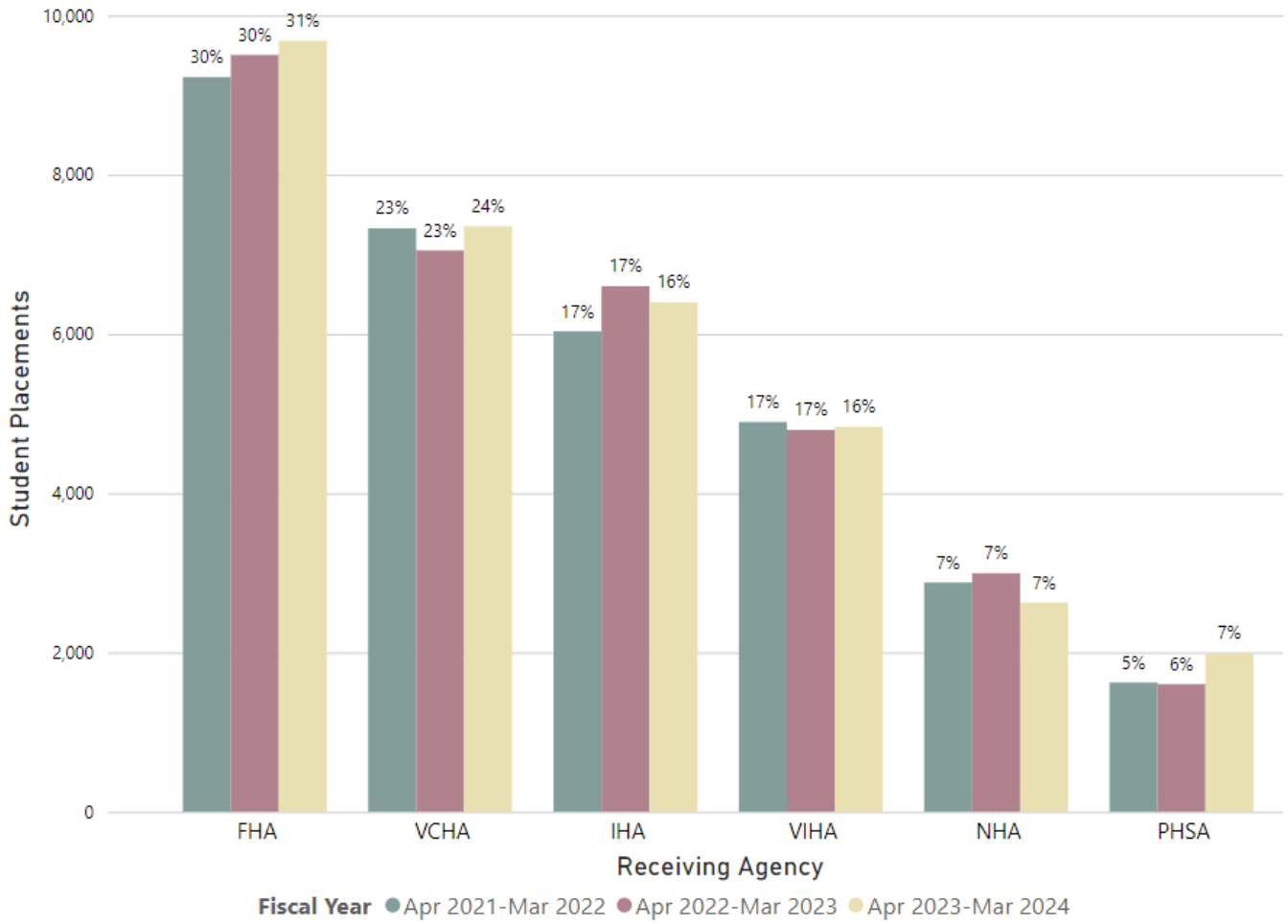


Figure 2: Student Placements at Health Authorities Comparing FY 2021-22, 2022-23, and 2023-24



All disciplines activity across health authorities

Table 2 below provides both the number of confirmed student placements and number of confirmed student hours at health authorities in BC, over fiscal year 2023-24, by both discipline and sub-discipline (for PSI educational programs, see [Appendix C](#) Glossary). This provides a high-level overview of regional distribution for where students in a particular sub-discipline are having clinical placements. It presents past activity data for further analysis and discussion. Disciplines are listed in order of highest to lowest placement hours. Nursing has the highest number of placements – accounting for 64% of all student hours and placement requests. Within nursing, the baccalaureate of nursing sub-discipline accounts for 70% of the nursing student hours. Licensed Practical nurses represent 12% of all nursing student hours and 13% of nursing student placements. Comparatively, the next largest is the technologist/technician discipline accounting for 11% of all student hours and 6% of placement. A much smaller proportion of requests are made by the rehabilitation sciences, pharmacy, social work, other allied health programs, administration, midwifery, and management.

Table 2: Student Placement and Hours All Disciplines & Sub-disciplines by Receiving Agency FY 2023-24

Discipline/Sub-discipline	FHA		IHA		NHA		PHSA		VCHA		VIHA		Grand Total	
	Student Hours	Student Placements	Student Hours	Student Placements	Student Hours	Student Placements	Student Hours	Student Placements	Student Hours	Student Placements	Student Hours	Student Placements	Student Hours	Student Placements
Nursing	996,097	6,861	498,323	4,279	179,546	1,829	162,286	1,357	772,818	5,208	537,767	3,006	3,146,838	22,540
Bacc Nursing - BScN/BSN/BN	628,623	4,288	367,547	3,193	136,338	1,526	129,177	1,092	527,656	3,320	406,030	2,049	2,195,369	15,468
Bacc Nursing - Post Diploma BSN/BN	15,122	54	8	1					12,839	47			27,969	102
Doctor of Nursing							50	1					50	1
Licensed/Registered Practical Nurse	126,630	837	77,691	734	20,138	163	1,010	10	98,681	722	65,708	469	389,857	2,935
Nurse Practitioner	10,302	73	5,143	30	3,304	18	2,527	26	7,069	64	6,969	49	35,314	260
Nursing - Masters	312	3					689	11	896	15			1,897	29
Post-LPN/RPN Specialty	1,345	11	1,759	7					932	8	2,000	16	6,035	42
Post-RN Specialty	65,236	658	7,836	71	5,001	38	6,626	80	55,746	556	25,541	236	165,985	1,639
Psychiatric Nursing - Diploma	32,634	210	36,580	236	13,116	78	8,928	57	5,880	33	21,512	141	118,650	755
Psychiatric Nursing - BScN/BN/RPN Psych	52,211	399					11,629	74	40,449	303			104,288	776
Psychiatric Nursing Bacc - BScN/BN/RPN Psych - Post Diploma	320	2	160	1									480	3
Registered Nurse	63,364	326	1,600	6	1,650	6	1,650	6	22,672	140	10,008	46	100,944	530
Technologist/Technician	180,676	723	86,538	229	47,446	111	20,380	118	121,019	392	73,333	332	529,391	1,905
Cardiology/Cardiovascular Tech	16,501	73	4,494	14			180	24	11,600	47	4,365	16	37,140	174
Clinical Genetics Technologist	1,050	3					3,300	9	1,500	4			5,850	16
Electroencephalograph Technologist	2,100	7	721	2	315	1	140	1	1,953	8	553	2	5,782	21
Magnetic Resonance Imaging (MRI) Technology/Technician	9,900	23	1,800	3	1,800	3	300	1	9,080	17	3,600	10	26,480	57
Medical Laboratory Assistant	16,293	209	9,240	33	3,080	14	1,740	12	7,122	49	8,870	59	46,345	376
Medical Laboratory Technologist	50,400	32	29,301	23	12,801	17	9,450	6	34,650	22	13,731	13	150,333	113

Discipline/Sub-discipline	FHA		IHA		NHA		PHSA		VCHA		VIHA		Grand Total	
	Student Hours	Student Placements	Student Hours	Student Placements	Student Hours	Student Placements	Student Hours	Student Placements	Student Hours	Student Placements	Student Hours	Student Placements	Student Hours	Student Placements
Nuclear Medicine Tech	10,900	90	480	5			2,032	27	7,120	56	960	8	21,492	186
Other Technologist			11,681	47	2,903	9							14,583	56
Perfusionist	1,125	3	1,575	3			225	2	2,550	5	525	1	6,000	14
PolySomnography Technologist/Technician			80	1									80	1
Radiology Tech	27,163	62	9,565	22	18,547	40	710	11	17,406	41	23,936	112	97,326	288
Sonography Tech	21,040	133	17,202	75	8,000	27	2,303	25	14,091	108	16,793	111	79,429	479
Sterile Processing Technician	24,205	88	400	1					13,947	35			38,552	124
Other Health	60,710	686	91,258	994	41,764	388	23,046	62	50,465	318	65,198	637	332,440	3,085
Activity Assistant	30	1	210	3	90	1							330	5
Addiction Counselling			210	1									210	1
Anesthesia Assistant			4,800	8									4,800	8
Bachelor of Public Health										450	2		450	2
Biomedical Engineer	700	4	175	1	175	1	175	1	350	2	175	1	1,750	10
Biomedical Technologist			200	1					400	2			600	3
Child Life Specialist							360	1			360	1	720	2
Community Care Licensing	720	3											720	3
Community Health & Preventive Medicine	3,670	28					1,550	11	260	1	6,738	37	12,218	77
Environmental Health	4,200	10	1,740	5	420	1			2,520	6	420	1	9,300	23
Exercise physiology/science			252	9									252	9
Health/Medical Physics			272	1									272	1
Kinesiology	50	2											50	2
Master of Science in Medical Genetics							10,591	22	1,131	7			11,722	29
Masters of Public Health	2,922	7	450	1			10,038	24	1,796	4	900	2	16,106	38
Other Health							332	3	80	1	4,993	25	5,405	29
Res. Care/Health Care/Institutional Aide	48,418	631	82,859	962	41,079	385			43,883	294	51,162	568	267,400	2,840
Various - Multidisciplinary/Interdisciplinary			90	2					45	1			135	3
Rehabilitation Sciences	70,801	447	22,670	180	22,894	160	8,523	51	68,489	470	22,102	116	215,478	1,424
Audiologist	2,214	10	729	3					1,434	8	1,008	4	5,385	25
Community Rehabilitation Program											300	1	300	1
Occupational Therapist	24,554	111	6,775	34	7,613	38	4,973	22	23,263	109	7,508	36	74,685	350
Occupational Therapy Assistant			3	1									3	1
Physiotherapist	27,992	217	6,762	43	10,869	98	2,043	20	28,028	257	8,022	46	83,716	681
Prosthetist	45	18	130	1					44	18	130	1	349	38

Discipline/Sub-discipline	FHA		IHA		NHA		PHSA		VCHA		VIHA		Grand Total	
	Student Hours	Student Placements	Student Hours	Student Placements	Student Hours	Student Placements	Student Hours	Student Placements	Student Hours	Student Placements	Student Hours	Student Placements	Student Hours	Student Placements
Rehabilitation Assistant	12,637	74	5,716	88	4,232	23	600	4	8,348	43	2,938	17	34,471	249
Speech & Language Pathologist	3,359	17	2,556	10	180	1	907	5	7,373	35	2,196	11	16,571	79
Therapist	37,872	64	24,408	49	5,900	9	45,217	160	51,453	182	13,140	21	177,990	485
Art Therapist	700	1							300	2			1,000	3
Massage Therapist			28	7			996	36	2,313	92			3,337	135
Music Therapist	312	4					928	2	8,540	15			9,780	21
Radiation Therapist							22,013	36					22,013	36
Recreation Therapist Degree	140	1	160	1			700	2	3,220	11	140	1	4,360	16
Recreation Therapy Assistant Diploma	320	2	1,320	6					1,880	8			3,520	16
Respiratory Therapist	36,400	56	22,900	35	5,900	9	20,580	84	35,200	54	13,000	20	133,980	258
Pharmacy	33,270	197	19,620	97	4,020	26	11,850	59	25,875	150	17,800	98	112,435	627
Pharmacist	27,370	160	16,320	78	3,200	21	8,290	41	22,975	132	15,680	85	93,835	517
Pharmacy Technician	5,900	37	3,300	19	820	5	3,560	18	2,900	18	2,120	13	18,600	110
Emergency Medical Technology	1,728	204	2,682	329	247	29	94,352	847	2,941	292	3,767	467	105,716	2,168
Paramedic-Advanced/Critical Care	520	53	213	19	43	5	192	24	913	42	43	5	1,923	148
Paramedic-Advanced/Critical Care - on-car							23,055	129					23,055	129
Paramedic-Primary Care/Emergency Medical Technician	1,208	151	2,469	310	204	24			2,028	250	3,725	462	9,633	1,197
Paramedic-Primary Care/EMT - on-car							71,105	694					71,105	694
Social Work	23,075	55	18,547	51	10,187	25	15,213	34	18,064	45	11,806	34	96,892	244
Bachelor of Social Work	13,587	33	9,008	28	8,363	21	1,974	5	5,572	16	7,335	21	45,839	124
Child and Youth Care Worker	1,427	4					3,327	7	400	1	600	2	5,754	14
Human Services			540	3							960	4	1,500	7
Master of Social Work	8,061	18	8,999	20	1,824	4	9,912	22	12,092	28	2,806	6	43,694	98
Social Services Worker											105	1	105	1
Food & Nutrition	18,051	85	8,185	39	2,463	12	8,124	36	23,772	140	5,620	31	66,215	343
Dietitian - Bachelors	17,040	72	8,160	38	2,438	11	7,508	32	20,880	89	5,400	27	61,426	269
Dietitian - Masters	308	2					616	4					924	6
Food Services Management	703	11	25	1	25	1			2,892	51	220	4	3,865	68
Administration	27,954	219	10,448	105	616	6	3,754	32	7,175	70	4,239	41	54,186	473
Clerical - General			360	4									360	4
Health Unit Coordinator/Nursing Unit Clerk	19,560	149	8,798	85	456	4	2,984	23	4,709	45	3,439	34	39,946	340
Hospital & Health Care Facilities Admin.	5,040	42							360	3			5,400	45

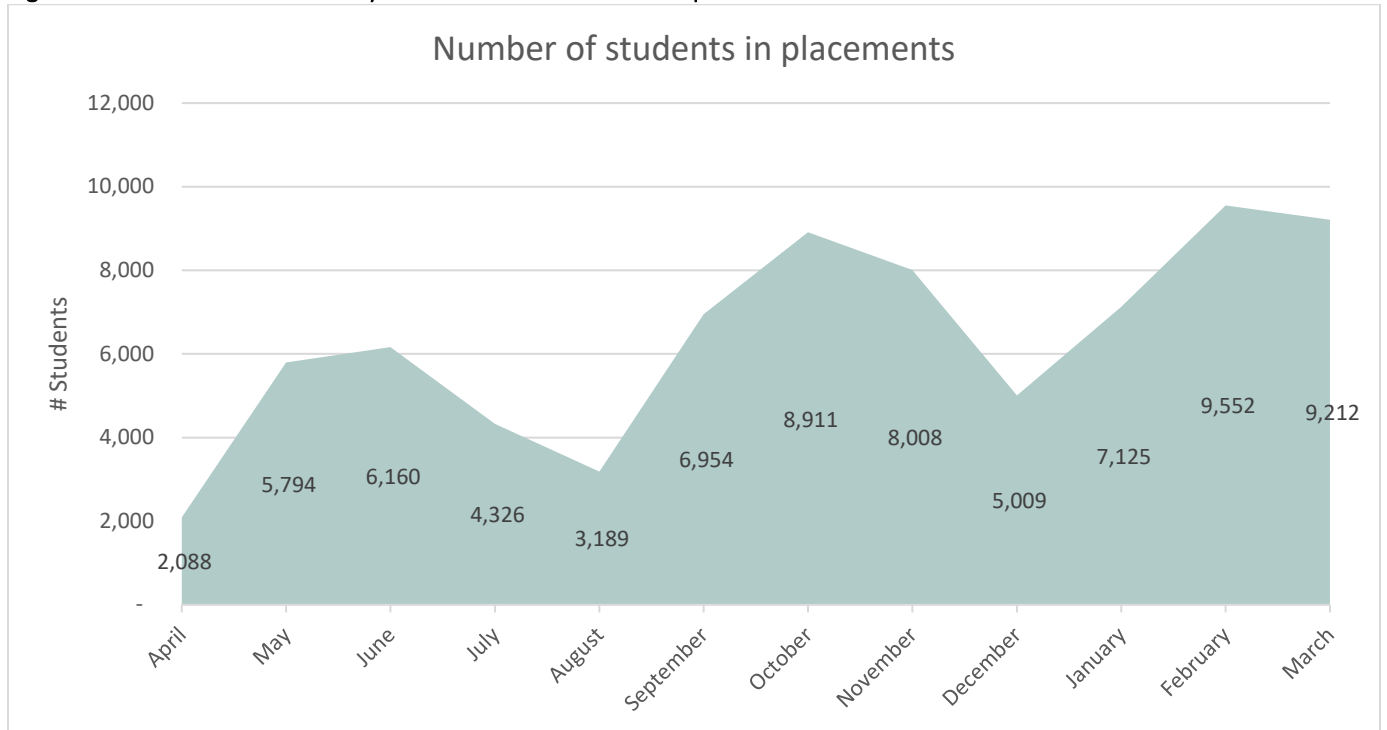
Discipline/Sub-discipline	FHA		IHA		NHA		PHSA		VCHA		VIHA		Grand Total	
	Student Hours	Student Placements	Student Hours	Student Placements	Student Hours	Student Placements	Student Hours	Student Placements	Student Hours	Student Placements	Student Hours	Student Placements	Student Hours	Student Placements
Human Resources Management	920	2											920	2
Library and Information Technology									105	1			105	1
Library Technician	70	1											70	1
Medical Office Assistant	2,150	23	1,290	16	160	2	770	9	1,665	17	560	6	6,595	73
Medical Transcriptionist	214	2							336	4			550	6
Other Administrative											240	1	240	1
Medicine	17,462	43	5,832	19	1,860	6	11,171	37	6,630	25	8,987	41	51,942	171
Midwifery	17,462	43	5,832	19	1,860	6	11,171	37	6,630	25	8,987	41	51,942	171
Psychology	6,262	16	3,520	11			2,847	8	7,054	23	1,700	6	21,383	64
Counselling Psychology	4,880	11	3,100	8			600	2	4,900	12	900	3	14,380	36
Psychology (Masters)	900	2					200	1	650	2			1,750	5
Psychology (PHD)	482	3	420	3			2,047	5	1,504	9	800	3	5,253	23
Non-Health	2,451	29	1	1	400	10	1,437	11	4,965	14	940	4	10,194	69
Bachelor of Arts							64	1					64	1
Bachelor of Science	25	1							25	1			50	2
Education - General							120	1					120	1
Master of Business Administration	200	10											200	10
Other Non Health Disciplines	1,776	17	1	1	400	10	1,253	9	4,940	13	940	4	9,310	54
Youth and Child Care	450	1											450	1
Health Information Management	4,489	39			70	1			388	7	35	1	4,982	48
HIM Prof./Health Records Administrator	4,324	38			70	1			388	7	35	1	4,817	47
Other	165	1											165	1
Gerontology			960	15									960	15
Gerontology Diploma Prog			960	15									960	15
Management							210	3	140	2			350	5
Policy and Planning							210	3	140	2			350	5
Dental Medicine	45	15			52	13			42	14			139	42
Dental Hygienist	45	15			52	13			42	14			139	42
Grand Total	1,480,943	9,683	792,993	6,398	317,464	2,625	408,409	2,815	1,161,288	7,352	766,433	4,835	4,927,529	33,708

*Midwifery is included in the discipline of Medicine. Medical undergraduates and residents are not included.

Student placement activity by month

For all disciplines combined, Figure 3 depicts the total number of students on a placement that started in a particular month. For example, in October 2024 there were 3,141 students starting a health authority placement and the total number of students on placement in October 2024 was 8,911. Given that student placement start dates vary by discipline and by length of time, the students listed in one month may still be on-site completing the placement in subsequent months. In other words, the actual number of students in a health authority at any given time may be greater than that indicated in Table 3.

Figure 3: Students in Placement by Month FY 2023-24 – All Disciplines



Student placement starts by month

The total number of placements (32,885) by discipline and sub-discipline per month for the province is seen in Table 3, demonstrating at a glance the types of students and volumes that have been supported throughout the last fiscal year. This data can be used to anticipate student volumes by discipline throughout the calendar year; plan for students in advance, including support for the planning required for preceptor assignment, development, and availability; and, schedule students learning activities such as on-site training, and interprofessional collaborative practice events and learning opportunities. The data highlights the student placement start dates across a calendar year, with most placements beginning in January, May, and September, and August and December are when the least number of students start.

Figure 4: Confirmed Student Placements by Start Month FY 2023-24

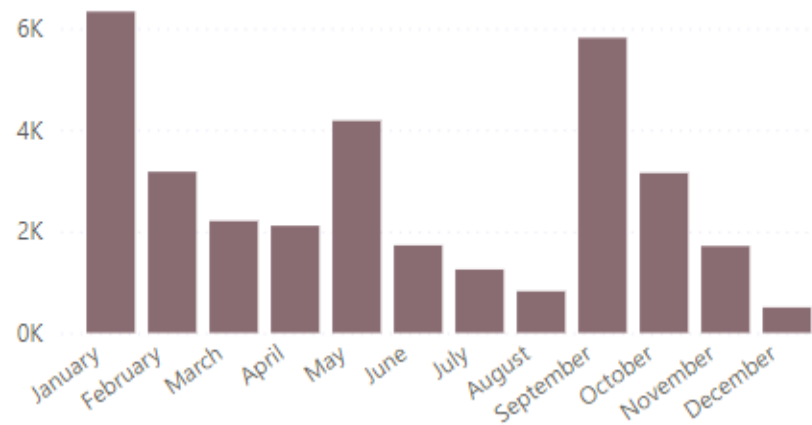


Table 3: Confirmed Student Placements for all Disciplines and Sub-disciplines by Month FY 2023-24

Discipline/Sub-discipline	Winter			Spring/Summer				Fall			Total		
	Jan	Feb	Mar	Apr	May	Jun	Jul	Aug	Sep	Oct		Nov	Dec
Nursing	5,120	2,137	1,274	1,124	2,802	923	585	298	4,733	2,375	907	262	22,540
Registered Nurse	51	89	31	4	67	87	8	7	107	45	13	21	530
Psychiatric Nursing Bacc - BScN/BN/RPN Psych - Post Diploma	1	1	1										3
Psychiatric Nursing Bacc - BScN/BN/RPN Psych	210	153			34				224	154	1		776
Psychiatric Nursing - Diploma	77	90	59	54	48	128		95	57	31	42	74	755
Post-RN Specialty	287	154	140	176	164	81	63	51	202	251	67	3	1,639
Post-LPN/RPN Specialty		4	11			1	12	2		12			42
Nursing - Masters	16				1	1			11				29
Nurse Practitioner	69	2		15	52	7	14		72	5	24		260

Discipline/Sub-discipline	Winter			Spring/Summer					Fall			Total	
	Jan	Feb	Mar	Apr	May	Jun	Jul	Aug	Sep	Oct	Nov		Dec
Licensed/Registered Practical Nurse	312	276	384	177	269	292	193	75	169	334	330	124	2,935
Doctor of Nursing		1											1
Bacc Nursing - Post Diploma BSN/BN	36				27		2		36	1			102
Bacc Nursing - BScN/BSN/BN	4,061	1,367	648	698	2,140	326	293	68	3,855	1,542	430	40	15,468
Other Health	251	389	352	297	219	237	262	228	292	244	262	52	3,085
Various - Multidisciplinary/Interdisciplinary	3												3
Resident Care / Health Care / Institutional Aide	209	373	336	269	174	226	247	212	284	215	258	37	2,840
Other Health	13			2	2							12	29
Masters of Public Health	12		1	3	21				1				38
Master of Science in Medical Genetics	1	3	1			1	1	14	2	4	2		29
Kinesiology	1								1				2
Health/Medical Physics	1												1
Exercise physiology/science	1	1			3	1			1	1	1		9
Environmental Health			14		1	6		2					23
Community Health and Preventive Medicine		10		13	15		14			24	1		77
Community Care Licensing												3	3
Child Life Specialist									2				2
Biomedical Technologist					3								3
Biomedical Engineer				10									10
Bachelor of Public Health	2												2
Anesthesia Assistant	8												8
Addiction Counselling									1				1
Activity Assistant		2				3							5
Technologist/Technician	269	110	94	147	284	115	222	127	285	150	73	29	1,905
Sterile Processing Technician	39				1				76	8			124
Sonography Tech	72	44	2	53	65	16	81	54	32	40	20		479
Radiology Tech	82	2	3	1	109	1	4	20	62	3	1		288
PolySomnography Technnologist/Technician	1												1
Perfusionist	1	1		3					4	1		4	14
Other Technologist	4	15	13		14	1	5			4			56

Discipline/Sub-discipline	Winter			Spring/Summer				Fall			Total		
	Jan	Feb	Mar	Apr	May	Jun	Jul	Aug	Sep	Oct		Nov	Dec
Nuclear Medicine Tech	14	14	19	14	14	31	19	15	14	16	15	1	186
Medical Laboratory Technologist	1					37	75						113
Medical Laboratory Assistant	23	27	50	37	36	15	28	7	65	57	26	5	376
Magnetic Resonance Imaging (MRI) Technology/Technician	24	7	1		8	4		9	2	2			57
Electroencephalograph Technologist	3		1	4			4	3		6			21
Clinical Genetics Technologist			5		3	2	2	3	1				16
Cardiology/Cardiovascular Tech	5			35	34	8	4	16	29	13	11	19	174
Rehabilitation Sciences	99	203	275	166	188	27	33	62	32	28	311		1,424
Speech & Language Pathologist/Communications	1			27	8	15	6		18	2	2		79
Rehabilitation Assistant	16	1	101	20	35		21			1	54		249
Prosthetist	1			4	1					17	15		38
Physiotherapist	3	135	127	74	86	2		61	5	4	184		681
Occupational Therapy Assistant		1											1
Occupational Therapist	75	59	46	41	51	3	6	1	8	4	56		350
Community Rehabilitation Program									1				1
Audiologist	3	7	1		7	7							25
Emergency Medical Technology	148	124	104	120	213	150	54	40	133	108	88	63	1,345
Paramedic-Primary Care/Emergency Medical Technician	139	122	98	47	198	132	54	40	133	101	81	52	1,197
Paramedic-Advanced/Critical Care	9	2	6	73	15	18				7	7	11	148
Pharmacy	95	60	2	16	152	87	23	33	66	88	5		627
Pharmacy Technician	11	6		15	12	7	6	1	28	20	4		110
Pharmacist	84	54	2	1	140	80	17	32	38	68	1		517
Therapist	54	26	44		38	118	19	22	36	28	16	84	485
Respiratory Therapist	12	12	13			102		12	13	10		84	258
Recreation Therapy Assistant Diploma	4		2		5	1	4						16
Recreation Therapist Degree	3		7		3				2		1		16
Radiation Therapist	11				12			8	5				36
Music Therapist	10				4	1	1	2	1	2			21
Massage Therapist	14	14	21		14	14	14		14	15	15		135
Art Therapist			1						1	1			3

Discipline/Sub-discipline	Winter				Spring/Summer				Fall				Total
	Jan	Feb	Mar	Apr	May	Jun	Jul	Aug	Sep	Oct	Nov	Dec	
Administration	48	50	27	106	85	33	31	5	34	18	35	1	473
Other Administrative	1												1
Medical Transcriptionist				6									6
Medical Office Assistant	14	8	8	3	8	5	14	2	2	8	1		73
Library Technician		1											1
Library and Information Technology				1									1
Human Resources Management					1				1				2
Hospital and Health Care Facilities Administration	14	1		8	9				13				45
Health Unit Coordinator/Nursing Unit Clerk	17	40	18	88	66	28	17	3	18	10	34	1	340
Clerical - General	2		1		1								4
Food & Nutrition	51	40	10	31	129	2	3		36	33	3	5	343
Food Services Management	17	7	7		27				3	1	3	3	68
Dietitian - Masters					2				2			2	6
Dietitian - Bachelors	34	33	3	31	100	2	3		31	32			269
Social Work	126			4	34				77	2	1		244
Social Services Worker				1									1
Master of Social Work	23				22				51	1	1		98
Human Services	2			1	4								7
Child and Youth Care Worker	1				3				10				14
Bachelor of Social Work	100			2	5				16	1			124
Medicine	13		16	30	18	19	8	1	37	27	1	1	171
Midwifery	13		16	30	18	19	8	1	37	27	1	1	171
Non-Health	3	11	2	17	1	4			20	9	1	1	69
Youth and Child Care												1	1
Other Non Health Disciplines	1	6	2	16	1	4			19	4	1		54
Master of Business Administration		5								5			10
Education - General				1									1
Bachelor of Science	2												2
Bachelor of Arts									1				1
Psychology	20	1	1	1	9	2	3	2	23	2			64

Discipline/Sub-discipline	Winter			Spring/Summer					Fall			Total	
	Jan	Feb	Mar	Apr	May	Jun	Jul	Aug	Sep	Oct	Nov		Dec
Psychology (PHD)	3	1	1	1	1	2	1	1	11	1			23
Psychology (Masters)	1						2		1	1			5
Counselling Psychology	16				8			1	11				36
Health Information Management	15		1	29	1						2		48
Other					1								1
HIM Professional/Health Records Administrator	15		1	29							2		47
Dental Medicine		13								29			42
Dental Hygienist		13								29			42
Gerontology	10	5											15
Gerontology Diploma Prog	10	5											15
Management	1								4				5
Policy and Planning	1								4				5
Grand Total	6,323	3,169	2,202	2,088	4,173	1,717	1,243	818	5,808	3,141	1,705	498	32,885

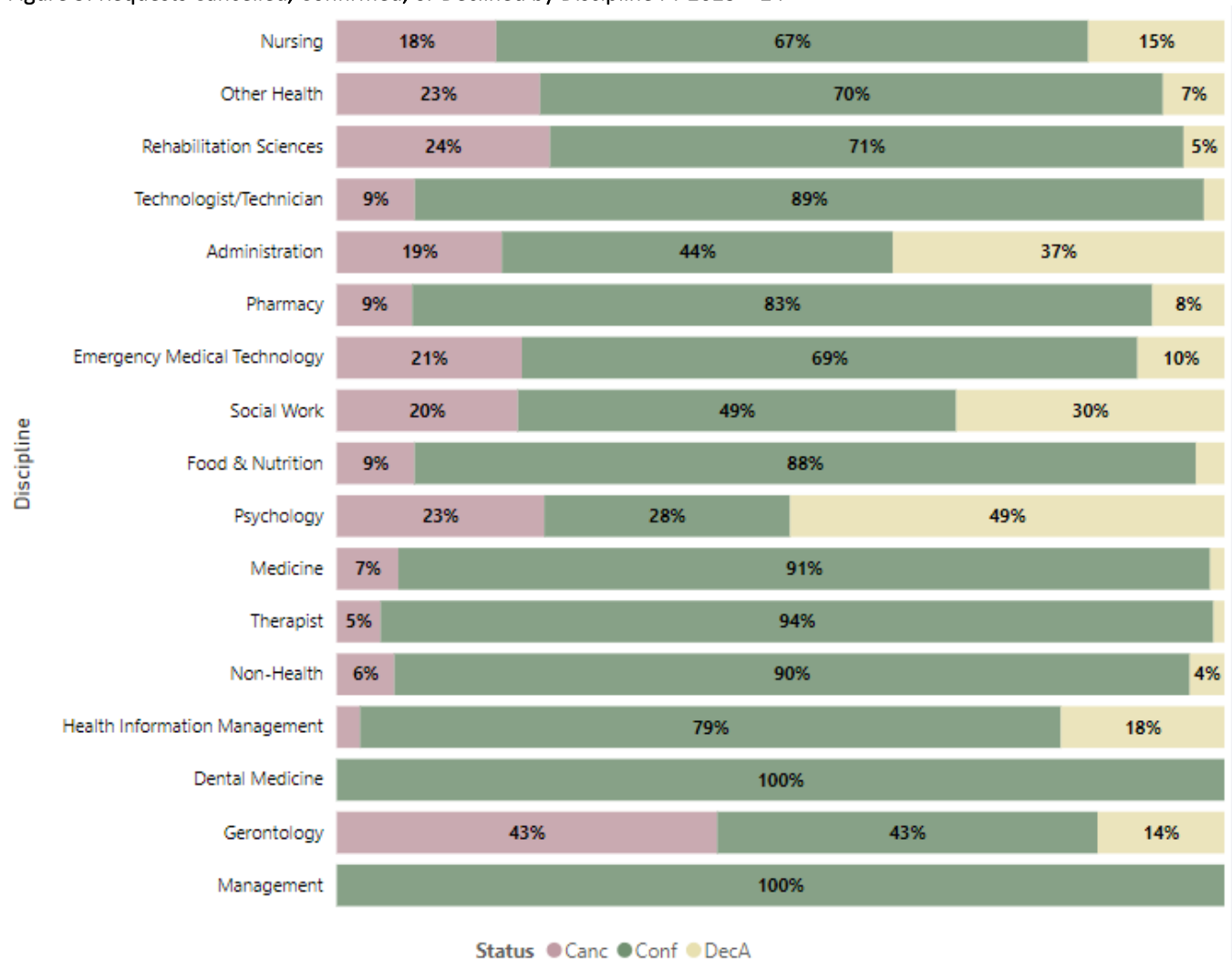
Note: Excluded from these graphs are on-car paramedic placements whose current policies result in an equal distribution of placements throughout the year.

INDICATOR #2 - MONITOR PLACEMENT COORDINATION EFFICIENCY

Figure 5 provides the request activity for all disciplines at BC health authorities. This indicates the amount of coordination activity required to result in a confirmed placement. As all required student placements are eventually secured, the Cancel and Decline requests indicate the overall coordination effort, affected by the complexity of the placements and the unique requirements of the sub-discipline.

This metric can be monitored to see if changes to the practice education placement process improves coordination efficiency (see Figure 5). Cancellations are 89% by Placing Agencies (i.e., PSIs) and Declines are 99% by Receiving Agencies (i.e., health authorities). When placements are Declined or Cancelled, subsequent placement requests are made by the Placing Agency, ensuring all students can complete a placement. Currently, the best metric of placement capacity is the confirmation rates that indicate both physical and operational capacity to host students in health authorities. This data is useful for examining placement rates at specific Receiving Agencies to remove barriers and examine supports necessary to host students.

Figure 5: Requests Cancelled, Confirmed, or Declined by Discipline FY 2023 – 24

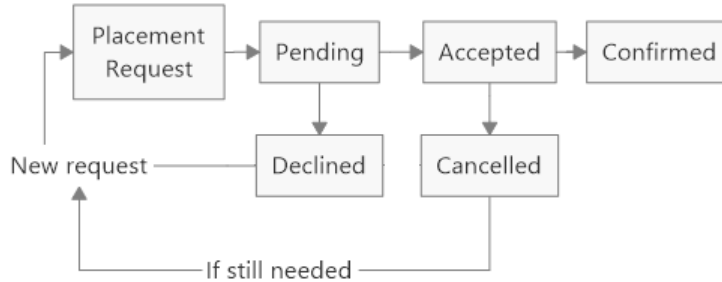


INDICATOR #3 - BUILD PLACEMENT CAPACITY AND INNOVATION

Top 10 Decline and Cancel Reasons

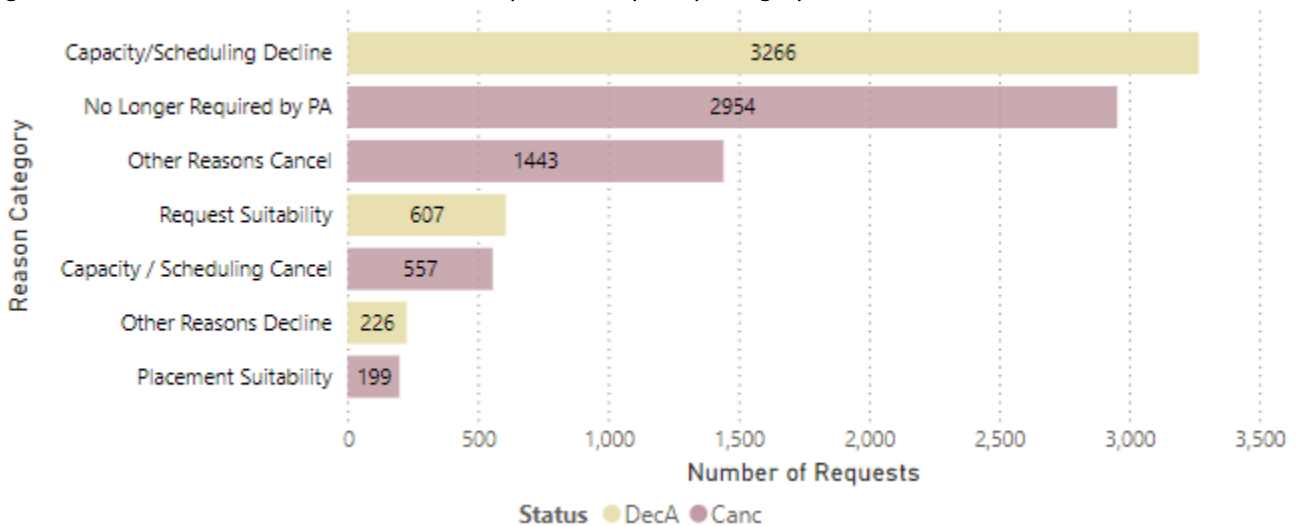
The main placement request statuses that are monitored are Confirmed and Accepted (these indicate placements that occurred); and Declined (DecA) and Cancelled (Canc) (these indicate placement requests that did not occur). Of the total number of requests made (24,947) by a Placing Agency (PA) 68% are Confirmed (17,011) by the Receiving Agency (RA), whereas 18% (4,392) are Cancelled and 13% (3,328) are Declined ([Appendix D](#), Table 4).

Figure 6: Placement request lifecycle



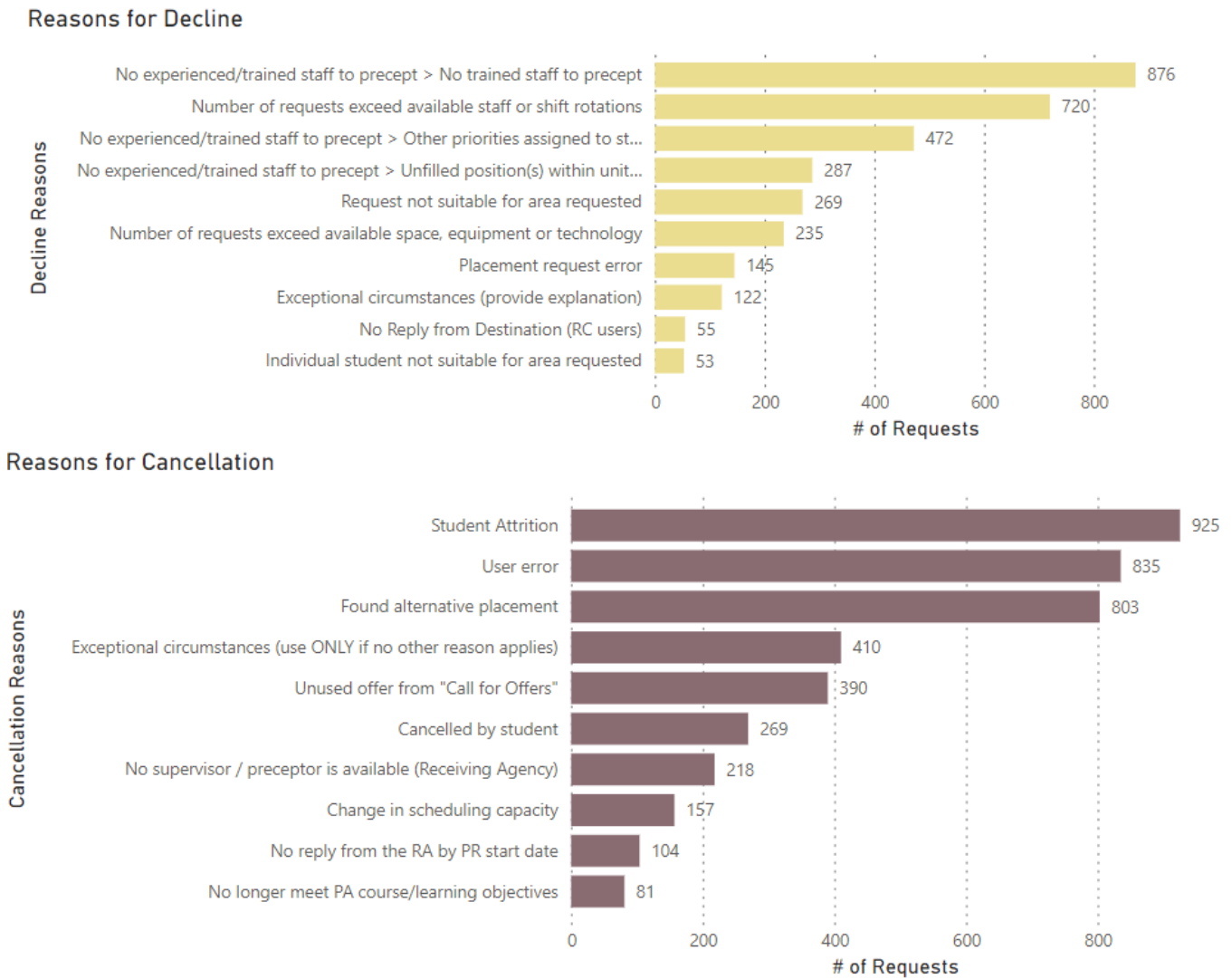
A reason is provided every time a request is Declined or Cancelled. Figure 7 provides a summary of the reason category whereas Figure 8 provides greater specificity of the top 10 decline and top 10 cancel reasons for all disciplines. This data leads to follow-up actions by both receiving agencies and placing agencies to improve placement coordination such as suitability of the request and placement.

Figure 7: Reasons for Declined and Cancelled Requests Grouped by Category FY 2023-24



The main reasons Placing Agencies cancel a request is student attrition and user error. The top reasons that a Receiving Agency declines a request is a lack of staff to preceptor/supervise students (e.g., none trained, unfilled positions, and staff on leave) and the number of requests exceeds available staff and physical space. Some reasons for cancellation (e.g., user error) represent opportunities for system improvements.

Figure 8: Top 10 Reasons for Declined and Cancelled Requests FY 2023-24



APPENDIX A: PROVINCIAL STUDENT PRACTICE EDUCATION ANNUAL METRICS FRAMEWORK

1. Indicator: Monitor Provincial Student Practice Education Activities

This category includes measures that demonstrate level of commitment to students and preceptors across the province over three fiscal years.

Tables & Figures

- a. # of Students, Placement Hours by Discipline & Sub-Discipline and Receiving Agency Table 2
Figure 1 & Figure 2
- b. *# of Medical Students (Under-grads and Post-grads)*
- c. *# of placements by status/site regions/disciplines*
- d. # of Confirmed Placement Requests by Month Table 3
Figure 3 & 4
- e. *# of Preceptors in HSPnet With a Placement/Fiscal Year*

2. Indicator: Monitor Placement Coordination Efficiency

This category includes measures that indicate the efficiency of coordinating student placements across the province over one fiscal year. Given that all students end up with clinical placements, these measures provide data on the proportion of placements that require more than one request.

- a. Rate of request confirm/cancel/decline by discipline Figure 5
- b. *Number of placement confirm/cancel/decline by sub-discipline* *Reported in 2021-22 only*

3. Indicator: Build Placement Capacity and Innovation

This category includes measures that address need and capacity for student placements, as well as innovative placement models.

- a. # of Placement hours/Program/Sub-discipline/Placing Agency See Placement need report
- b. *# of placement hours/Discipline/Sub-discipline/Receiving Agency*
- c. *# of Inter-professional placement destinations/request status*
- d. *Distribution of Student Hours by Care Setting/discipline*
- e. # of Decline and Cancel by Reason (Top 10 reasons) Figure 7 & Figure 8
- f. *# of Staff Participants in Preceptor/Educator Training*

4. Indicator: Monitor the Quality of the Clinical Learning Environment

This category includes measures for monitoring quality learning environments.

- a. *Evaluation approach TBD*

Note: grey, italicized text represent metrics not reported

APPENDIX B: REGIONAL STUDENT PRACTICE EDUCATION METRICS FRAMEWORK

Student Education data will be made available both annually as aggregate provincial data (see [Appendix A](#)); and throughout the year to support regional monitoring and decision-making activities at regular intervals (e.g. each term, prior to reply-by timeframes), as outlined below.

Indicator: Monitor Provincial Student Practice Education Activities

This category includes measures that placement requests and status by term.

- a) # of Students, Placement Hours by Discipline & Sub-discipline and Receiving Agency
- b) *Placement usage by status/site regions/disciplines*
- c) # of Confirmed Placement Requests by Month

Indicator: Monitor Placement Coordination Efficiency

This category includes measures that indicate the efficiency of coordinating student placements across the province over one fiscal year. These measures provide data on the proportion of placements that require more than one request.

- a) Rate of placement confirm/cancel/decline by discipline

Indicator: Build Placement Capacity and Innovation

This category includes measures that address need and capacity for student placements, as well as innovative placement models.

- a) *# of Placement hours/Program/Sub-discipline/Placing Agency*
- b) *# of placement hours/Discipline/Sub-discipline/Receiving Agency*
- c) *# of Inter-professional placement destinations/request status*
- d) *Distribution of Student Hours by Care Setting/discipline*

Indicator: Monitor the Quality of the Clinical Learning Environment

This category includes measures for monitoring quality learning environments.

- a) *Evaluation approach TBD*

Note: grey, italicized text represent forthcoming metrics

APPENDIX C: GLOSSARY

GLOSSARY	
HSPnet DEFINITIONS	
HOURS	
Student Hours	Total number of placement hours for all students (groups and non-groups) for all confirmed placements (calculated as # of students x the number of placement hours requested).
Placement Hours	Total number of hours requested, per student/group for all confirmed placements.
PLACEMENT STATUS	
Cancelled	A Confirmed, Redirected or Accepted request that has been Cancelled by the Placing Agency or Receiving Agency (with reasons).
Confirmed	Represents all accepted requests that are confirmed by the school and agency.
Accepted by Agency	Represents all accepted requests that have not been confirmed by the school. Once a school accepts the placement, it becomes a Confirmed Status.
Declined	A Pending or Redirected request that has been declined by the Receiving or Placing Agency (with reasons).
OTHER APPLICABLE HSPnet TERMS	
Discipline / Sub-discipline	The classification of the field of study. The list in HSPnet is based on the Classification of Instructional Programs (CIP) codes for education programs. Discipline: General category of Instructional Programs Sub-discipline: Qualification upon completion of a program
Placing Agency	Typically, a health sciences educational institution that initiates a student placement but can be any organization that places a student (e.g. BCEHS).
Placement Destination	The physical or virtual location in which the student will complete their placement experience (e.g. 6 th floor surgical ward, 2B). A destination is considered “active” if a Destination Coordinator is actively managing the Inbox (accepting/declining).
Receiving Agency/Site	The agency (typically but not necessarily a health services organization) that receives a student placement request. The Receiving Agency represents the legal entity (health authority, private lab, etc.) as opposed to the placement destination or site.
GENERAL TERMS	
Students	Learners who are involved in a Student Education experience as part of their studies in an undergraduate, graduate, post-graduate or post-professional education program in the health and human services professions. This may include students from non-clinical programs in health services support areas such as information management, human resources, communications and decision support.
Student Practice Education	The component of an educational program in which students learn and practice in a community, clinical or simulated setting. It provides the experiential learning that helps students acquire the necessary skills, attitudes and knowledge to practice effectively in their field. It may include direct contact with patients/clients and access to their personal health information.
Fiscal Years	April 1, 2020 – March 31, 2021 April 1, 2021 – March 31, 2022 April 1, 2022 – March 31, 2023 April 1, 2023 – March 31, 2024

APPENDIX D: DATA TABLES

Table 4 reports the number of placement requests throughout the year and the percentage of the total requests for each Placement Status. For FY 2023-24, 68% of requests were confirmed and 31% of requests resulted in the submission of another request by the Placing Agency. See Figure 6 and Figure 7 for the reasons for Declined and Cancelled requests.

A Cancelled or Declined request results in a new request being required to ensure every student can meet their educational practice requirements. This table depicts the activity required to result in a Confirmed placement. There was no significant change in the total number of requests the last 3 years. However, the Confirmed request rate has increased slightly. This maybe an indicator of efficiencies made; however, a more detailed examination of the reasons can assist to provide further insights.

Table 4: Total # and % of Placements Request Status all Disciplines by Fiscal Year

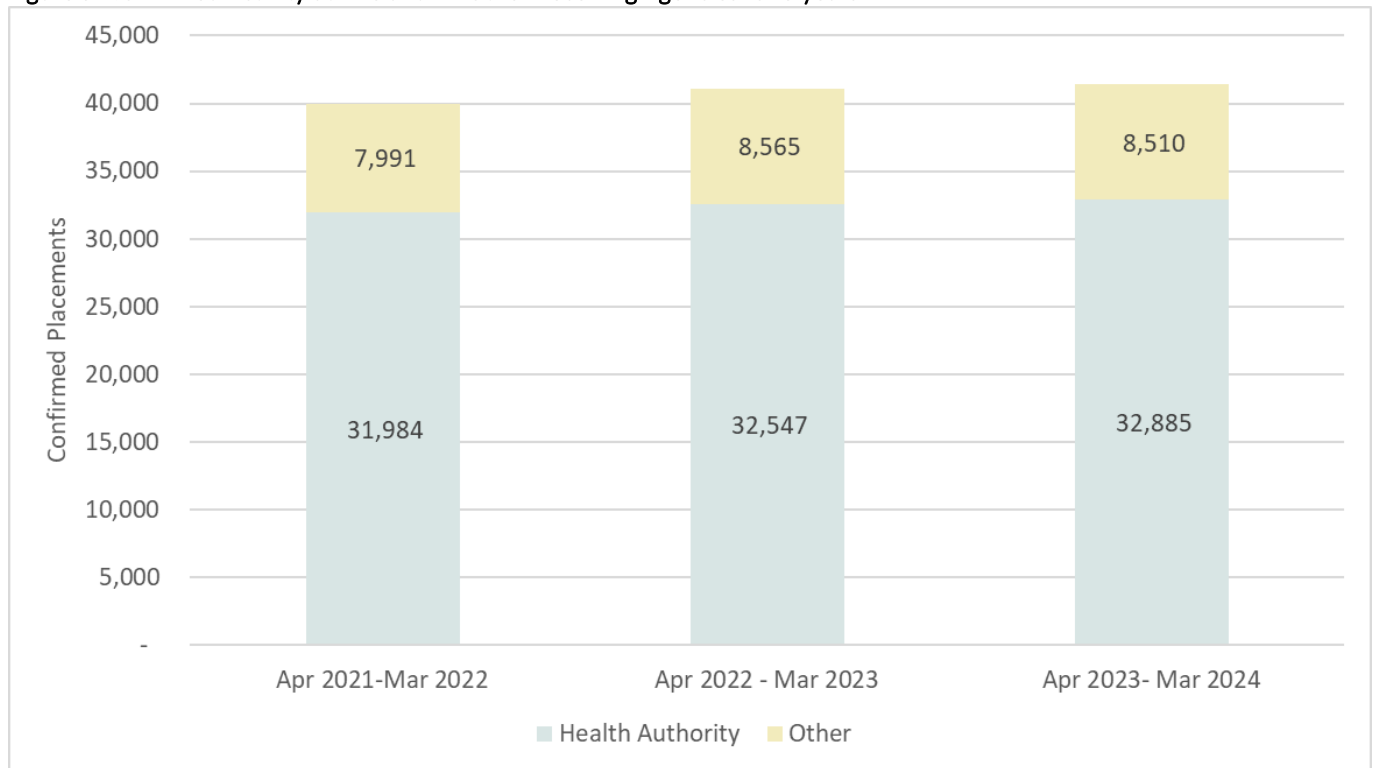
Fiscal Year Status	Apr 2021-Mar 2022		Apr 2022-Mar 2023		Apr 2023-Mar 2024	
	# of requests	% of requests	# of requests	% of requests	# of requests	% of requests
Conf	16,266	65%	16,874	67%	17,011	68%
Canc	4,422	18%	4,630	18%	4,392	18%
DecA	3,962	16%	3,392	13%	3,328	13%
New	147	1%	247	1%	121	0%
AccA	41	0%	52	0%	55	0%
Redir	22	0%	7	0%	30	0%
Sent	3	0%	9	0%	3	0%
AccD					3	0%
Reac			1	0%		
Total	24,863	100%	25,212	100%	24,943	100%

ACTIVITY AT BC HEALTH AUTHORITIES AND ALL OTHER RECEIVING AGENCIES

Figure 9 depicts the number of confirmed placements at BC health authorities and all other receiving agencies. There are roughly 50 non-health authority receiving agencies included in the placement numbers below. Examples of non-authority agencies are post-secondary clinics, affiliated and private long-term care, community pharmacies, and some private clinics.

Overall, there was an increase in confirmed placements in HSPnet from 41,112 (2022-23) to 41,395 (2023-24). Based on the data captured in HSPnet in the last 3 years, the proportion of activity between HA and non-HA placements has remained stable, with a 1% (8,565 to 8,510) decrease in non-HA placements from the previous year.

Figure 9: Confirmed Activity at HAs and All Other Receiving Agencies for 3 years

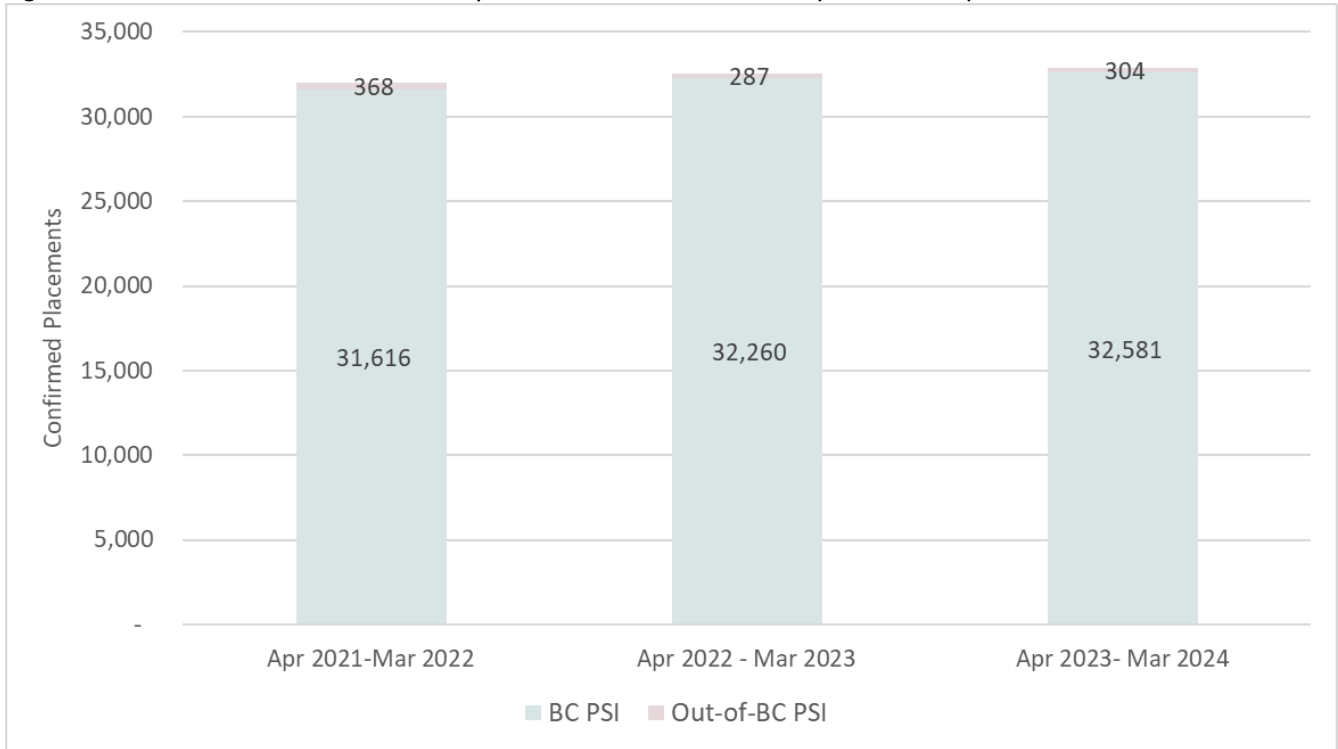


ACTIVITY FROM POST-SECONDARY INSTITUTIONS OUTSIDE BC

Figure 10 depicts the number of confirmed student placements at BC health authorities from PSI in and out of BC over the last three years.

A consistent proportion of placements are from BC PSI, with less than 1% of confirmed placements from out of BC PSI in the last year. The total number of placement requests from out-of-BC schools over the last three years is 805, 637, and 567.

Figure 10: Number of Student Placements by in-BC and Out-of-BC Schools by FY – All Disciplines



SUB-DISCIPLINES AND BC POST-SECONDARY INSTITUTIONS LIST

Table 5 lists the Disciplines and Sub-disciplines alphabetically and the PSI with confirmed placements in health authorities (other is not included) in FY 2023-24. The percentage is each institution's portion of confirmed placements within the sub-discipline. For example, UBC placed 69% of the Dental Hygienists that had confirmed placements in a health authority. This data does not capture placements not in a BC health authority or from out-of-BC Placing Agencies.

Specially for baccalaureate nursing programs, the top three Placing Agencies are BC Institute of Technology (14.74%), UBC Okanagan Campus (11.18%) and Langara College (9.7%). For Licensed Practical Nurse programs, the top three Placing Agencies are Vancouver Community College (19.99%), Sprott-Shaw College (19.65%), and Okanagan College (13.92%). In the Technologist/Technician discipline, the largest sub-discipline is Medical Laboratory Assistants, with 22.61% of requests coming from Stenberg College.

Table 5: All Sub-disciplines Reported in FY 2023- 24 and the Providing Post-Secondary Institution

Discipline/Sub-discipline	% of Student Placements	Discipline/Sub-discipline	% of Student Placements
Administration		Okanagan College	11.83%
Other Administrative		Selkirk College	6.80%
Athabasca University	100.00%	Sprott-Shaw College	22.49%
Medical Transcriptionist		Stenberg College International Inc.	20.12%
Vancouver Community College	100.00%	University of the Fraser Valley	14.50%
Medical Office Assistant		Vancouver Community College	10.36%
Academy of Learning	1.37%	Vancouver Island University	3.25%
BC Institute of Technology	27.40%	Clerical - General	
Cambria College	2.74%	Okanagan College	100.00%
CDI College	1.37%	Dental Medicine	
Douglas College	15.07%	Dental Hygienist	
Okanagan College	30.14%	College of New Caledonia	30.95%
Sprott-Shaw College	1.37%	University of British Columbia	69.05%
University of the Fraser Valley	8.22%	Emergency Medical Technology	
Vancouver Community College	12.33%	Paramedic-Primary Care/Emergency Medical Technician	
Library Technician		BC Emergency Health Services	0.33%
University of the Fraser Valley	100.00%	Columbia Paramedic Academy (Heartsafe EMS)	15.54%
Library and Information Technology		Justice Institute of BC	84.13%
Langara College	100.00%	Paramedic-Advanced/Critical Care	
Human Resources Management		Columbia Paramedic Academy (Heartsafe EMS)	13.01%
Kwantlen Polytechnic University	100.00%	Justice Institute of BC	86.99%
Hospital and Health Care Facilities Administration		Food & Nutrition	
Stenberg College International Inc.	100.00%	Food Services Management	
Health Unit Coordinator/Nursing Unit Clerk		Langara College	100.00%
Academy of Learning	0.89%	Dietitian - Masters	
BC Institute of Technology	2.07%	University of British Columbia	100.00%
Guildford College	3.85%	Dietitian - Bachelors	
North Island College	3.85%	University of British Columbia	100.00%

Discipline/Sub-discipline	% of Student Placements
Gerontology	
Gerontology Diploma Prog	
Selkirk College	100.00%
Health Information Management	
HIM Professional/Health Records Administrator	
Douglas College	100.00%
Management	
Policy and Planning	
University of British Columbia	100.00%
Medicine	
Midwifery	
University of British Columbia	100.00%
Non-Health	
Other Non Health Disciplines	
College of New Caledonia	19.23%
Douglas College	3.85%
Langara College	5.77%
Placing Agencies - BC Other	65.38%
Simon Fraser University	1.92%
University of British Columbia	1.92%
Vancouver Island University	1.92%
Master of Business Administration	
Simon Fraser University	100.00%
Education - General	
Langara College	100.00%
Bachelor of Science	
Kwantlen Polytechnic University	100.00%
Bachelor of Arts	
Kwantlen Polytechnic University	100.00%
Nursing	
Registered Nurse	
Kwantlen Polytechnic University	89.21%
Okanagan College	3.47%
Thompson Rivers University	7.32%
Psychiatric Nursing Bacc - BScN/BN/RPN Psych - Post Diploma	
Douglas College	100.00%
Psychiatric Nursing Bacc - BScN/BN/RPN Psych	
Douglas College	89.30%
Kwantlen Polytechnic University	10.70%
Psychiatric Nursing - Diploma	
Stenberg College International Inc.	100.00%

Discipline/Sub-discipline	% of Student Placements
Post-RN Specialty	
BC Institute of Technology	97.72%
Douglas College	0.06%
UBC Okanagan Campus	1.08%
University of Northern British Columbia	1.14%
Post-LPN/RPN Specialty	
Douglas College	38.10%
Okanagan College	61.90%
Nursing - Masters	
Trinity Western University	3.85%
University of British Columbia	53.85%
University of Victoria	42.31%
Nurse Practitioner	
Athabasca University	5.00%
University of British Columbia	30.83%
University of Northern British Columbia	28.33%
University of Victoria	35.83%
Licensed/Registered Practical Nurse	
Camosun College	2.93%
CDI College	8.08%
Coast Mountain College	0.82%
College of New Caledonia	2.59%
College of the Rockies	1.67%
Discovery Community College	6.07%
Kwantlen Polytechnic University	0.14%
Nicola Valley Institute of Technology	0.34%
North Island College	2.01%
Northern Lights College	2.22%
Okanagan College	13.92%
Selkirk College	1.88%
Sprott-Shaw College	19.65%
Stenberg College International Inc.	6.96%
Thompson Rivers University	0.48%
University of the Fraser Valley	3.04%
Vancouver Career College	3.96%
Vancouver Community College	19.99%
Vancouver Island University	3.27%
Bacc Nursing - Post Diploma BSN/BN	
Langara College	100.00%
Bacc Nursing - BScN/BSN/BN	
Athabasca University	0.08%
BC Institute of Technology	14.74%

Discipline/Sub-discipline	% of Student Placements
Camosun/UVic Joint BSN Program	8.02%
Coast Mountain College	0.28%
College of New Caledonia	1.91%
College of the Rockies	1.41%
Douglas College	5.98%
Kwantlen Polytechnic University	5.70%
Langara College	9.70%
North Island College	1.76%
Northwestern Polytechnic	0.02%
Selkirk College	1.92%
Thompson Rivers University	6.41%
Trinity Western University	2.40%
UBC Okanagan Campus	11.18%
University of British Columbia	7.88%
University of Northern British Columbia	8.25%
University of the Fraser Valley	6.05%
Vancouver Community College	2.93%
Vancouver Island University	3.37%
Other Health	
Various - Multidisciplinary/Interdisciplinary	
University of British Columbia	100.00%
Resident Care / Health Care / Institutional Aide	
Cambria College	1.23%
Camosun College	5.14%
Capilano University	0.25%
Coast Mountain College	2.71%
Collège Educentre	0.07%
College of New Caledonia	6.13%
College of the Rockies	3.66%
Discovery Community College	2.25%
Douglas College	3.98%
Gateway College	0.70%
Kwantlen Polytechnic University	5.70%
Native Education College	2.11%
Nicola Valley Institute of Technology	2.71%
North Island College	3.03%
Northern Lights College	3.84%
Okanagan College	10.53%
Selkirk College	5.46%
Sprott-Shaw College	9.01%
Stenberg College International Inc.	1.48%
Thompson Rivers University	9.58%
University of the Fraser Valley	6.73%
Vancouver Community College	3.73%
Vancouver Island University	9.61%
Western Community College	0.35%
Other Health	
Camosun College	4.00%

Discipline/Sub-discipline	% of Student Placements
Vancouver Island University	96.00%
Masters of Public Health	
Simon Fraser University	42.86%
University of British Columbia	28.57%
University of Victoria	28.57%
Master of Science in Medical Genetics	
University of British Columbia	100.00%
Kinesiology	
Douglas College	100.00%
Health/Medical Physics	
UBC Okanagan Campus	100.00%
Exercise physiology/science	
University of British Columbia	100.00%
Environmental Health	
BC Institute of Technology	100.00%
Community Health and Preventive Medicine	
Camosun College	36.36%
Discovery Community College	2.60%
Douglas College	48.05%
Vancouver Island University	12.99%
Community Care Licensing	
Justice Institute of BC	100.00%
Biomedical Engineer	
BC Institute of Technology	100.00%
Bachelor of Public Health	
University of Victoria	100.00%
Anesthesia Assistant	
Thompson Rivers University	100.00%
Activity Assistant	
College of the Rockies	60.00%
University of the Fraser Valley	40.00%
Pharmacy	
Pharmacy Technician	
CDI College	18.18%
Okanagan College	12.73%
Selkirk College	6.36%
Stenberg College International Inc.	42.73%
Vancouver Community College	20.00%
Pharmacist	
University of British Columbia	100.00%
Psychology	
Psychology (PHD)	
Simon Fraser University	27.27%
UBC Okanagan Campus	13.64%
University of British Columbia	45.45%
University of Victoria	13.64%
Psychology (Masters)	
Adler University	20.00%

Discipline/Sub-discipline	% of Student Placements
Placing Agencies - BC Other	20.00%
Simon Fraser University	60.00%
Counselling Psychology	
Adler University	5.00%
Athabasca University	5.00%
City University of Seattle in Vancouver BC	50.00%
Trinity Western University	25.00%
University of British Columbia	5.00%
University of Victoria	10.00%
Rehabilitation Sciences	
Speech & Language Pathologist/Communications	
University of British Columbia	100.00%
Rehabilitation Assistant	
Capilano University	32.93%
Okanagan College	35.77%
Vancouver Community College	30.08%
Vancouver Island University	1.22%
Prosthetist	
BC Institute of Technology	100.00%
Physiotherapist	
University of British Columbia	100.00%
Occupational Therapist	
Placing Agencies - BC Other	0.30%
University of British Columbia	99.70%
Audiologist	
University of British Columbia	100.00%
Social Work	
Social Services Worker	
Academy of Learning	100.00%
Master of Social Work	
UBC Okanagan Campus	31.51%
University of British Columbia	34.25%
University of Northern British Columbia	8.22%
University of the Fraser Valley	13.70%
University of Victoria	12.33%
Human Services	
College of the Rockies	42.86%
North Island College	57.14%
Child and Youth Care Worker	
Douglas College	28.57%
University of the Fraser Valley	57.14%
University of Victoria	14.29%
Bachelor of Social Work	
Nicola Valley Institute of Technology	2.59%
Thompson Rivers University	20.69%
University of British Columbia	18.97%
University of Northern British Columbia	16.38%
University of the Fraser Valley	17.24%

Discipline/Sub-discipline	% of Student Placements
University of Victoria	10.34%
Vancouver Island University	13.79%
Technologist/Technician	
Sterile Processing Technician	
Vancouver Community College	100.00%
Sonography Tech	
BC Institute of Technology	66.74%
Camosun College	16.74%
College of New Caledonia	16.53%
Radiology Tech	
BC Institute of Technology	43.71%
Camosun College	38.46%
College of New Caledonia	17.83%
PolySomnography Technologist/Technician	
Thompson Rivers University	100.00%
Perfusionist	
BC Institute of Technology	100.00%
Other Technologist	
College of New Caledonia	22.50%
Okanagan College	77.50%
Nuclear Medicine Tech	
BC Institute of Technology	100.00%
Medical Laboratory Technologist	
BC Institute of Technology	66.37%
College of New Caledonia	33.63%
Medical Laboratory Assistant	
Allied Healthcare Training Inc. West Coast College	9.57%
Cambria College	4.79%
Camosun College	3.72%
CDI College	9.31%
Stenberg College International Inc.	22.61%
Thompson Rivers University	21.81%
Vancouver Career College	13.30%
Vancouver Community College	14.89%
Magnetic Resonance Imaging (MRI) Technology/Technician	
BC Institute of Technology	100.00%
Electroencephalograph Technologist	
BC Institute of Technology	100.00%
Clinical Genetics Technologist	
BC Institute of Technology	100.00%
Cardiology/Cardiovascular Tech	
BC Institute of Technology	79.53%
Stenberg College International Inc.	20.47%
Therapist	
Respiratory Therapist	
Thompson Rivers University	100.00%
Recreation Therapy Assistant Diploma	
Douglas College	50.00%

Discipline/Sub-discipline	% of Student Placements
Stenberg College International Inc.	50.00%
Recreation Therapist Degree	
Douglas College	100.00%
Radiation Therapist	
BC Institute of Technology	100.00%
Music Therapist	

Discipline/Sub-discipline	% of Student Placements
Capilano University	100.00%
Massage Therapist	
Placing Agencies - BC Other	5.19%
West Coast College of Massage Therapy	94.81%
Art Therapist	
Vancouver Art Therapy Institute	100.00%

APPENDIX E: STUDENT PRACTICE EDUCATION DATA WORKING GROUP MEMBERSHIP

This report was developed with the oversight and contribution of the BC Student Practice Education Data Working Group (SPEDWG). The following is the membership for 2023-24:

Ministry

Kerry-Lynn Weatherhead, Senior Policy Analyst, Ministry of Post-Secondary Education and Future Skills

Melody Chilibeck, Senior Policy Analyst, Ministry of Health: Allied Health Policy Secretariat

Peter Rudiak-Gould, Senior Policy Analyst, Ministry of Health: Nursing Policy Secretariat

Brendan King, Senior Policy Analyst, Ministry of Health: Workforce Research and Results Management

Health Authorities

Richelle Maser, Regional Manager, Student Practice Education, Northern Health

Kathy Scarborough, Director, Learning Strategy and Innovations, Fraser Health

Victoria Skryabina, Business Analyst, Student Practice Education, Vancouver Coastal Health

Nicole Desjarlais, Manager, Clinical Education, Interior Health

Tammy Pentney, Practice Consultant, Clinical Learning & Knowledge Services, Island Health

Carrie Edge, Practice Consultant, Professional Practice, Providence Health Care

Post-Secondary Institutions

Treena Cardiff, Associate Dean, Diagnostics Program, BCIT

Erin Buskermolen, Clinical Placement Manager, Health Sciences, College of New Caledonia

Carrie Krekoski, Assistant Director, Education, UBC Health, UBC

Angela Wolff, Associate Professor, School of Nursing, Trinity Western University

Maureen Ryan, Associate Dean Academic, Faculty of Human & Social Development, University of Victoria

Ciara Mitenko, Practicum Coordinator, Health Programs, Vancouver Island University

Secretariat

Christie Diamond, Corporate Director, Academic Education, Provincial Health Services Authority

Sarah Titcomb, Coordinator, Academic Development, Provincial Health Services Authority

For questions regarding this Report, please email the Student Practice Education Data Working Group via Studenteducation@phsa.ca.

Revised Final - SPEDWG September 17, 2024

APPENDIX F: LIST OF REFERENCED URLS

In order to ensure access, the full hyperlink/URL are provided below:

Provincial Student Practice Education Policy:

<https://spe.healthcarebc.ca/Documents/2022%20SPE%20Policy%20-%20For%20Distribution.pdf>

Health Human Resource Strategy

<https://news.gov.bc.ca/files/BCHealthHumanResourcesStrategy-Sept2022.pdf>

Occupation-specific seat expansion news releases

- Nursing: <https://news.gov.bc.ca/releases/2022HLTH0004-000250>
- Midwives: <https://news.gov.bc.ca/releases/2023HLTH0010-000208>
- Allied: <https://news.gov.bc.ca/releases/2022HLTH0047-001138#:~:text=The%20new%20seats%20build%20on,million%20total%20planned%20by%202024.>
- Paramedics: <https://news.gov.bc.ca/releases/2023PSFS0005-000133>
- Medicine: <https://news.gov.bc.ca/releases/2022HLTH0059-001464>
<https://news.gov.bc.ca/releases/2024PSFS0030-001072>

and